

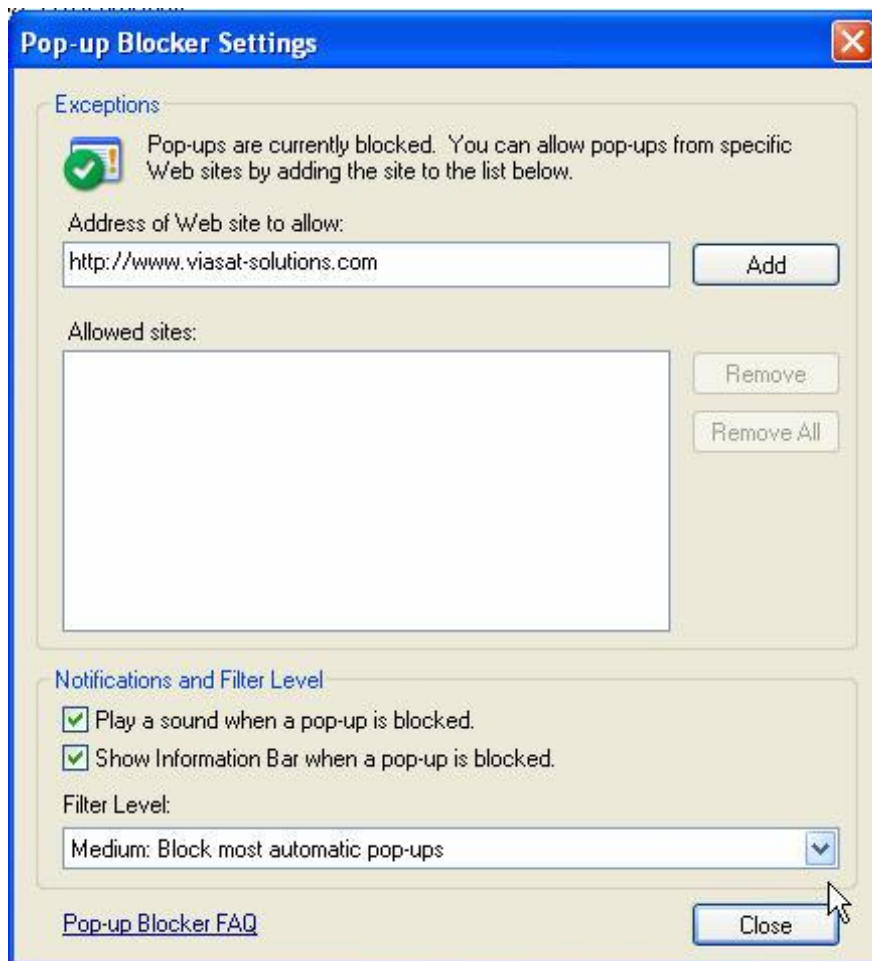
This website has been optimized for a screen resolution of 1024x768 and has been tested using Internet Explorer 6 and more only.

## 1. Settings

### a. Allowing popup

This site uses non-modal dialogs (popups). You must configure your popup blocker to accept them.

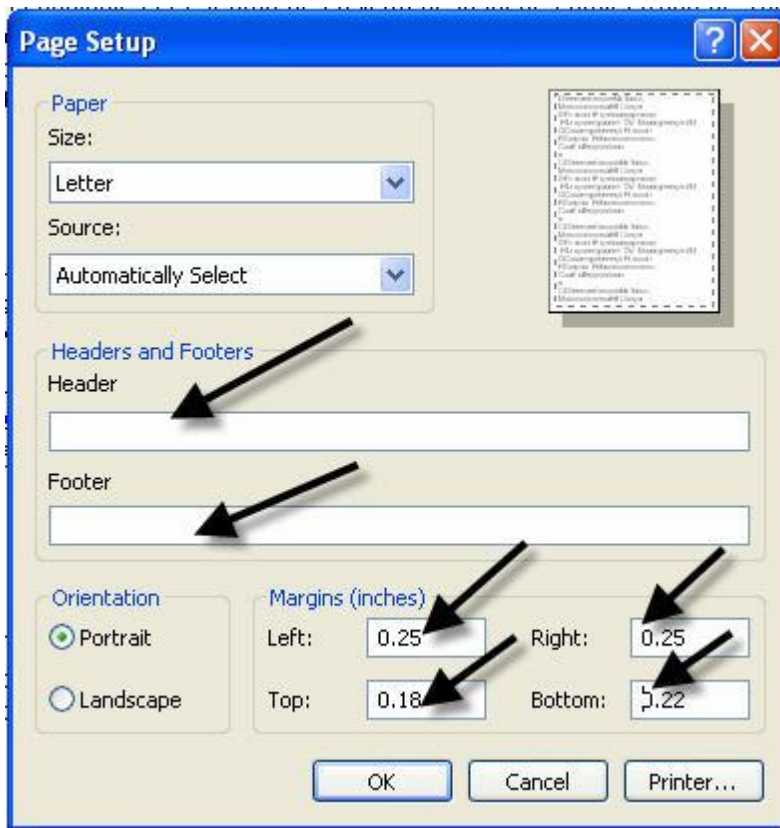
If you are using Windows XP SP2, in your browser, click **Tools/Block Pop-ups/Pop-up Blocker Settings** and add <http://www.cpat-solution.com/> to the list of authorized sites.



### b. Adjusting print settings

You must adjust certain settings to optimize the documents you print. You do not have to do this with every use, and this adjustment will not change your Word settings.

Click **File/Page Setup of your browser** and be sure that you delete the header and footer and that all margins are at 0.



## 2. Accessing C-PAT

<http://www.cpat-solution.com/C-PAT/login.aspx>

### CPAT // Login

This site is the property of VGI Solutions and is protected by copyright law. ©2007, VGI Solutions. All rights reserved. No parts, or functions can be reproduced, transmitted or stored in any other language, in any form or by any electronic, manual or other means, or communicated to a third party without the express written permission from VGI Solutions, 4101, Molson Street, Montréal (Québec, Canada) H1Y 3L1. If you agree with these terms of use and conditions, please fill the form below.



Identification

User

Password

[Forgot your password ?](#)  
[Need help?](#)

Login

Note 1 : This website has been optimized for a screen resolution of 1024x768 and has been tested using Internet Explorer 6-7 only.

Note 2 : This website uses non-modal dialogs. [Click here to test your settings](#)

Note 3 : If you are using Windows XP SP2, you must configure you browser to accept pop-ups from this site. To do so, point to Tools / Pop-up Blocker, click Pop-up Blocker Settings, type [www.cpat-solution.com](http://www.cpat-solution.com) in the Address of Web site to allow box, and then click Add.

Note 4 : In order to optimize the printing capabilities, margins should be adjusted to the smallest dimensions permitted. For the same reason, the header and the footer must be empty.

Note 5 : You will be automatically redirected to this page after 30 minutes of inactivity.

Then enter your user name and password. (Note: access to some C-PAT functions is determined by your network administrator. You may not be able to access some of the functions explained in this document.)

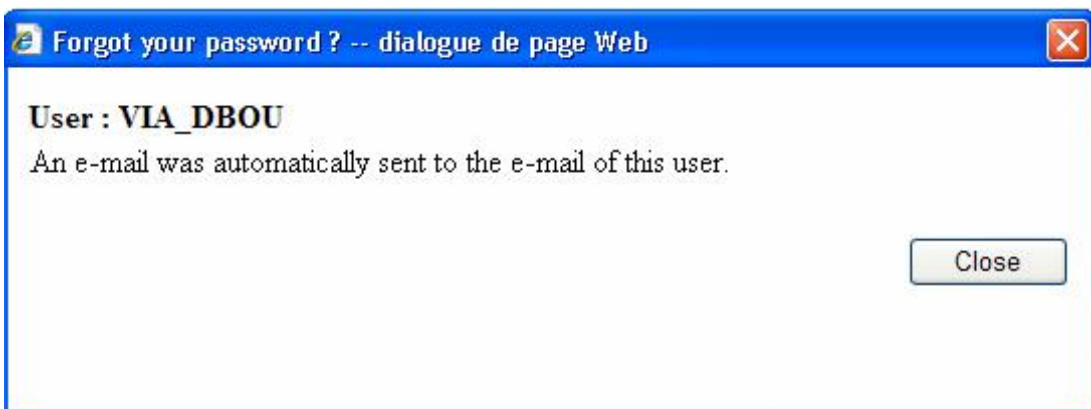
Attention: Your access will be deactivated following 30 minutes of inactivity; you will then have to reconnect to C-PAT to continue.

## 3. If you forgot your password

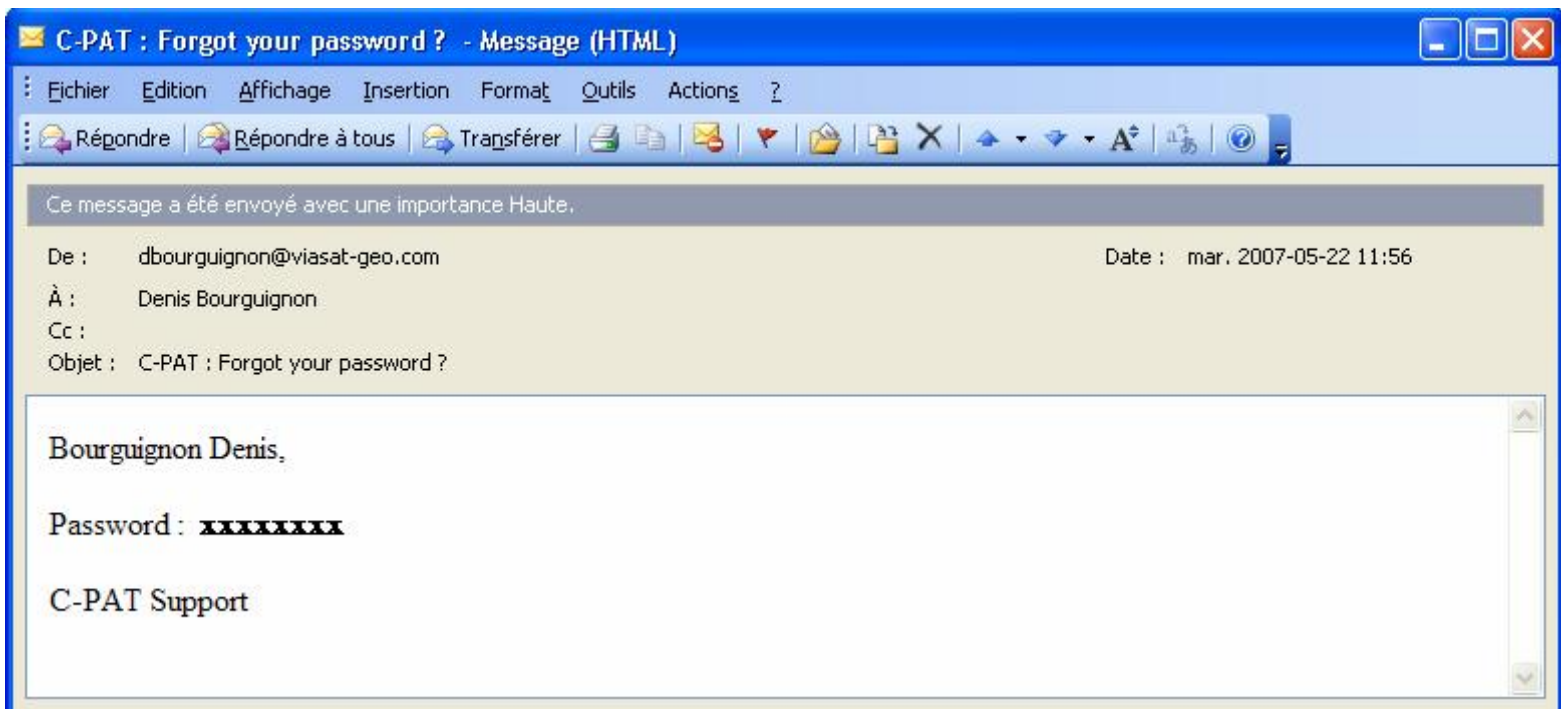
You can use « [Forgot your password](#) » function to receive it by e-mail. The e-mail must be the one used when the account was created.



By security measure, only the password is sent by e-mail. That is why the following window will remind you your login. It is important to note it, it will not appear in the e-mail.



The e-mail contains informations below :



#### **4. Introduction to key functions**

*Once logged on into C-PAT, open « Help – Key functions ».*